



Features

- IEEE802.11a
- OFDM
- Link Test
- WEP, WPA
WPA2
- Signal Status
Display by Led Line
- WEB
Management
- Poe Power
- Integrated 18dBi
panel antenna
- Built-in surge
protection
- 48V DC POE
- Designed for
Outdoor
applications
- Lower total cost
- Works with
Multicast Video
streaming

SPRINT V3



SKU: SILSPiV3-PCP

The advantages of the SPRINT V3

- Stable and reliable network. Being Weatherproof and having a built-in Surge Protector, the SPRINT V3 is perfectly designed to meet the needs of the harshest outdoor environments.
- Simple network structure. Easy to install. Power over Ethernet functionality requires only a single Ethernet cable between the LAN and the SPRINT V3 for sufficient power.

Contents

- 2 x SPRINT V3**
- 2 x Mounting brackets**
- 1 x Product CD**
- 2 x Power Adapter(48V)**



What is the SPRINT V3?

The SPRINT V3 is a Wireless outdoor bridge that has been optimised for distances up to 5km.

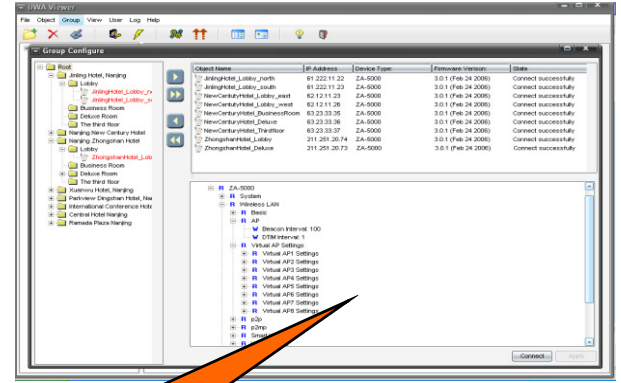
The SPRINT V3 works at 5Ghz and is compatible with the 802.11a standard. With high throughput and long-distance transmission, it is the best solution for carriers, service providers and enterprises. As an outdoor remote client, the SPRINT V3 can help integrators easily build up a broadband access system.

The SPRINT V3 also supports a variety of security features such as WEP, TKIP, AES, receive and transmit filtering, error recovery, quality of service (QoS) as well as IEEE802.1x standard, thus providing security to the wireless network and increase WLAN performance.

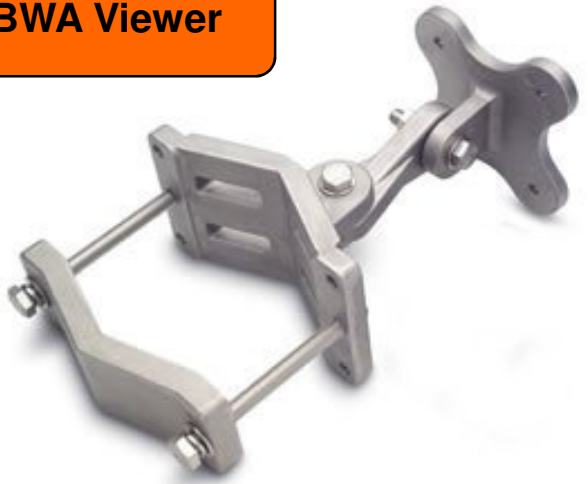
The SPRINT V3 is an Ideal low cost solution for point to point or point to multipoint links and has a built in 18dBi antenna.

Features	
Rate	Best 54 48 36 24 18 12 9 6 Mbps
Working Mode	Client Mode, WDS, Smart WDS
Link Test	Yes
Signal Indicators	0% <per<=10% 0 LED on 10% <per<=50% 1 LED on 50% <per<=80% 2 LED on 80% <per<=90% 3 LED on 90% <per<=100% 4 LED on Per=100% 5 LED on Per: Received Signal Ratio
Firmware upgrade	WEB, TFTP, FTP
Standards	IEEE802.11a IEEE802.3/u
Security	
WEP Encryption	64 / 128 / 152 bits
WPA-PSK (AES – TKIP)	Supported
Physical	
Antenna	Built in 18dBi Antenna
Antenna (External)	One N type (Female) interface
LAN/WAN	One 10/100BASE-T (RJ-45) LAN Port
Default button	Yes
LED	1-POWER, 1-WAN, 1-LAN, 5 Signal Indicator
Power	48VDC/0.83A
Channel (Country Dependent)	USA (FCC): 5.15GHz 5.35GHz; 5.725GHz~5.825GHz Europe (ETSI): 5.47GHz 5.85GHz China: 5.725GHz 5.85GHz
RF output power	16dBm (± 1dBm)+ 18dBi
Power Consumption	200mA@48v
Sensitivity	-72dBm@54Mbps
Dimensions	292 mm x 288 mm x 84 mm
Weight	1.4Kg
Management	
WEB	Yes
BWA Viewer	Yes
SNMP	Yes
Environment	
Operating Temperature	-20~65°C
Storage Temperature	-20~80°C
Humidity	5~95%

Monitoring Software Included



BWA Viewer



SPRINT Series Product Information

SPRINT 5Ghz
Budget Point to Point Solutions - Up to 3KM
22Mbps Data throughout
◆ 11a 54Mbps Bridge, IEEE802.11a, OFDM, WEP, WPA, WPA2, WEB Management, AP, AP Client, and Bridge, POE. Built in 14dBi antenna
SKU: **SILASPi**
Paired SKU: **SILASPi-PCP**

SPRINT 2.4Ghz
Budget Point to Point Solutions - Up to 3KM
22Mbps Data throughout
◆ 11g 54Mbps Bridge, IEEE802.11g, OFDM, WEP, WPA, WPA2, WEB Management, AP, AP Client, and Bridge, POE. Built in 14dBi antenna
SKU: **SILGSPi**
Paired SKU: **SILGSPi-PCP**

Distributed by:

Copyright © SilverNet Limited. All rights reserved. All other company and product names may be trademarks of their respective companies. Whilst every effort is made to make sure the information shown is accurate SilverNet Limited cannot accept liability for any errors that may arise. No freedom to use information, patents, trade marks, or other intellectual property rights is implied by the publication of this document. E&OE SilverNet Limited reserve the right to change specifications and other information within this document without notice and your attention is brought to the fact that performance figures are under ideal conditions. Actual performance will depend on many environmental factors and it is recommended that a site survey if undertaken prior to installation. Please also note that this equipment may also be subject to local legislative restrictions such as Band C operation within the UK. It is the end users responsibility to ensure that the installation complies with any such restrictions that are in force.