



A5 Sprint



SKU: SILA5SPi-PCP

■ Features

- 54Mbps
- AP, AP Client, and Bridge
- IEEE802.11a
- Metal case design
- OFDM
- WEP, WPA, WPA2
- WEB Management
- Point-to-Point
- Point-to-Multipoint
- POE

■ What is the A5 Sprint?

The A5 Sprint is a Wireless outdoor CPE that has been optimised for distances up to 3km.

The A5 Sprint works at 5GHz and is compatible with the 802.11a standard. With high throughput and long-distance transmission, it is the best solution for carriers, service providers and enterprises. As an outdoor remote client, the A5-Sprint can help integrators easily build up a broadband access system.

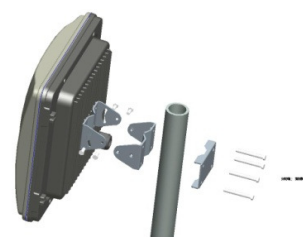
The A5 Sprint is an Ideal low cost solution for short-range point to point or point to multipoint links. It has WEP, WPA and WPA2 encryption and has a built in 14.5dBi antenna.

■ The advantages of the A5 Sprint

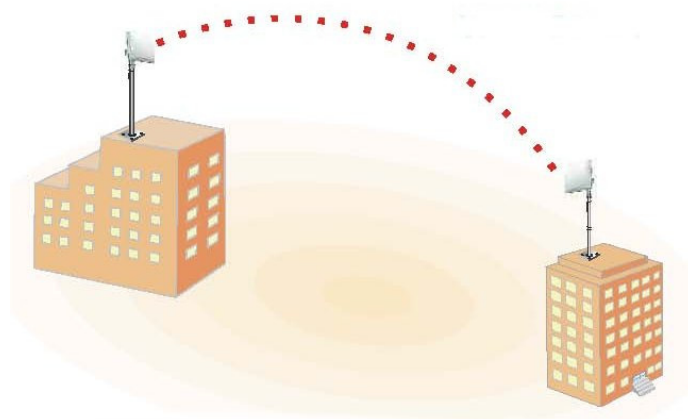
- Easy configuration. Supplied as pre-configured pairs so that all you need to do is power them up.
- Simple network structure. Easy to install. Power over Ethernet functionality requires only a single Ethernet cable between the LAN and the A5 Sprint for sufficient power.

Contents

- 2 x A5 Sprint
- 2 x Mounting brackets
- 2 x Product CD
- 2 x Power Adapter(48V)



Feature	
Transmission rate	54 48 36 24 18 12 9 6 Mbps
Operating Mode	AP, AP Client, and Bridge
Wireless	IEEE802.11a
Other wireless	Enable/Disable broadcast SSID
Standards	IEEE802.11a IEEE802.3/u IEEE802.3af
Security	
WEP Encryption	64 / 128 / 152 bits
Radius	Supports Radius Client
802.1x	Supports 802.1x Client and Server
WPA	Wi-Fi Protected Access (EAP, TKIP)
WPA2	AES/802.11i
SSID	Support Enable/Disable Broadcast
MAC	Supports MAC address filtering
Physical	
Gain	14.0 ± 0.5 dBi
HPBW/ Horizontal/ Vertical	35° x 35°
Front to back ratio	20dB
Max-bandwidth	Full: 100Mbps (100Base), 10Mbps (10Base)
LAN/WAN	One 10/100BASE-T (RJ-45) LAN Port
Default button	Yes
Power	DC 12~24Volt/1A; AC Adapter 100V~240V
Channel (Country Dependent)	USA (FCC): 5.15GHz~5.35GHz; 5.725GHz~5.825GHz Europe (ETSI): 5.47GHz ~5.850GHz China: 5.725GHz ~5.85GHz
RF output power	17dBm MAX from port
Sensitivity	-75dBm@54Mbps
Dust and Waterproof	Ip65 Certified
Dimensions	28.8 x 27.5 x 11 (cm)
Weight	2.5Kg
Management	
WEB	Yes
Firmware	Upgradeable via web
Environment	
Operating Temperature	-10~40°C
Humidity	0~90%



A5 Series Product Information

A5 23dBi Dual

Dual-RF Outdoor Access Point

◆ Integrated 23dB antenna and External port with N Type connector. Supports POE and 48V DC. Can work at 2.4 GHz and 5.8GHz simultaneously. SKU: SILA5D

A5 23dBi Integrated

Wireless Outdoor bridge

◆ Integrated 23dB antenna. Supports POE and 48V DC. Works at 5.8GHz with encryption. WDS (AP + Repeater). Link Test. 54Mbps. SKU: SILA5i

A5 Bridge

Wireless Outdoor Bridge

◆ External port with N Type connector. supports POE. Work at 5.8 GHz. 54 Mbps. Point to point, point to multipoint. SKU: SILA5BR

A5 19dBi CPE

Wireless Outdoor CPE

◆ Integrated 19dB antenna. Supports POE and 24V DC. Working at 5.8GHz with encryption. Client Mode. SKU: SILA5CP

A5 Base Station

Multi-sector Access Point

◆ Integrated 16dBi 60° panel antenna or external antenna. Supports POE and 48V DC. Works at 5.8GHz with encryption. SKU: SILA5BS

A5 E1/T1

Wireless Transmission system

◆ 54Mbps. Integrated 23dBi planar array antenna. Supports POE. Works at 5.8GHz with encryption. Point to point. SKU: SILA5E1