



Features

- 54Mbps
- AP, AP Client, and Bridge
- IEEE802.11a
- Dual Ethernet ports for local connectivity
- Metal case design
- OFDM
- TPC, DFS
- WEP, WPA(TKIP), WPA2(AES)
- WEB Management
- Point-to-Point
- Point-to-Multipoint
- POE

T +44 (0) 871 2233 067
F +44 (0) 870 622 0254
E sales@silvernet.com

www.silvernet.com

SPRINT 5Ghz



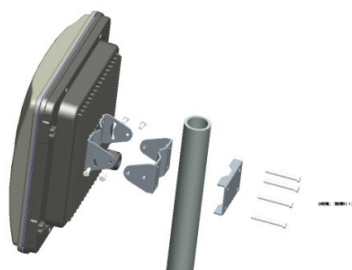
SKU: SILASPi-PCP

The advantages of the SPRINT 5Ghz

- Easy configuration. Supplied as pre-configured pairs so that all you need to do is power them up.
- Simple network structure. Easy to install. Power over Ethernet functionality requires only a single Ethernet cable between the LAN and the SPRINT 5Ghz for sufficient power.

Contents

- 2 x SPRINT 5Ghz
- 2 x Mounting brackets
- 1 x Product CD
- 2 x Power Adapter(48V)



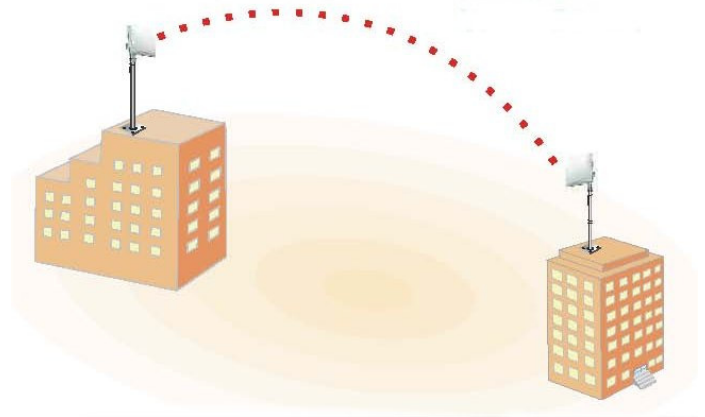
What is the SPRINT 5Ghz?

The SPRINT 5Ghz is a Wireless outdoor bridge that has been optimised for distances up to 3km.

The SPRINT 5Ghz works at 5Ghz and is compatible with the 802.11a standard. With high throughput and long-distance transmission, it is the best solution for carriers, service providers and enterprises. As an outdoor remote client, the SPRINT 5Ghz can help integrators easily build up a broadband access system.

The SPRINT 5Ghz also supports a variety of security features such as WEP, TKIP, AES, receive and transmit filtering, error recovery, quality of service (QoS) as well as IEEE802.1x standard, thus providing security to the wireless network and increase WLAN performance.

The SPRINT 5Ghz is an Ideal low cost solution for short-range point to point or point to multipoint links and has a built in 14.5dBi antenna.



3KM 'Link in a Box'

SPRINT Series Product Information

SPRINT 5Ghz

Budget Point to Point Solutions - Up to 3KM 22Mbps Data throughout

◆ 11a 54Mbps Bridge, IEEE802.11a, OFDM, WEP, WPA, WPA2, WEB Management, AP, AP Client, and Bridge, POE. Built in 14dBi antenna

SKU: **SILASPi**

Paired SKU: **SILASPi-PCP**

SPRINT 2.4Ghz

Budget Point to Point Solutions - Up to 3KM 22Mbps Data throughout

◆ 11g 54Mbps Bridge, IEEE802.11bg, OFDM, WEP, WPA, WPA2, WEB Management, AP, AP Client, and Bridge, POE. Built in 14dBi antenna

SKU: **SILGSPi**

Paired SKU: **SILGSPi-PCP**

| Feature | |
|-----------------------------|--|
| Transmission rate | 54 48 36 24 18 12 9 6 Mbps |
| Operating Mode | AP, AP Client, and Bridge |
| Wireless | IEEE802.11a |
| Other wireless | Enable/Disable broadcast SSID |
| Standards | IEEE802.11a IEEE802.3/u IEEE802.3af |
| Security | |
| WEP Encryption | 64 / 128 / 152 bits |
| Radius | Supports Radius Client |
| 802.1x | Supports 802.1x Client and Server |
| WPA (TKIP) | Wi-Fi Protected Access (EAP, TKIP) |
| WPA2 (AES) | AES/802.11i |
| SSID | Support Enable/Disable Broadcast |
| MAC | Supports MAC address filtering |
| Physical | |
| Gain | 14.0 ± 0.5 dBi |
| HPBW/ Horizontal/ Vertical | 35° x 35° |
| Front to back ratio | 20dB |
| Max-bandwidth | Full: 100Mbps (100Base), 10Mbps (10Base) |
| LAN/WAN | Dual 10/100BASE-T (RJ-45) LAN Port (with Auto MDI/MDIX) |
| Default button | Yes |
| Power | DC 12~48Volt or POE |
| Channel (Country Dependent) | USA (FCC): 5.15Ghz~5.35Ghz; 5.725Ghz~5.825Ghz Europe (ETSI): 5.47Ghz ~5.850Ghz China: 5.725Ghz ~5.85Ghz |
| RF output power | 17dBm MAX from port |
| Sensitivity | -70dBm@54Mbps |
| Dust and Waterproof | Ip65 Certified |
| Dimensions | 28.8 x 27.5 x 11 (cm) |
| Weight | 2.5Kg |
| Management | |
| WEB | Yes |
| Firmware | Upgradeable via web |
| Environment | |
| Operating Temperature | -20~70°C |
| Humidity | 0~90% |

Distributed by:

Copyright © SilverNet Limited. All rights reserved. All other company and product names may be trademarks of their respective companies. Whilst every effort is made to make sure the information shown is accurate SilverNet Limited cannot accept liability for any errors that may arise.

No freedom to use information, patents, trade marks, or other intellectual property rights is implied by the publication of this document. E&OE

SilverNet Limited reserve the right to change specifications and other information within this document without notice and your attention is brought to the fact that performance figures are under ideal conditions. Actual performance will depend on many environmental factors and it is recommended that a site survey if undertaken prior to installation.

Please also note that this equipment may also be subject to local legislative restrictions such as Band C operation within the UK. It is the end users responsibility to ensure that the installation complies with any such restrictions that are in force.