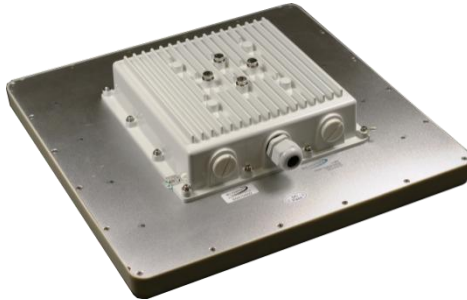




Features

- Up to 240Mbps
- 300 Mbps
- MIMO with spatial multiplexing
- DFS (Dynamic Frequency Selection)
- WEP, WPA(TKIP), WPA2(AES)
- Gigabit POE
- TPC (Transmit Power Control)
- AP, AP Client, and Bridge
- Metal case design
- Centralized management tools
- WEB Management
- Point-to-Point

11n MAX300 XT



SKU: SILMAX300XT-PCP

The advantages of the 11n MAX300 XT

- Up to **60km** Range
- Up to **240Mbps** throughput, Duplex
- Easy configuration. Supplied as pre-configured pairs so that all you need to do is power them up.
- Simple design. Easy to install.
- Power over Ethernet functionality requires only a single Ethernet cable between the LAN and the radio for sufficient power.
- **SilverView Monitoring Software** compliant.
- **Includes brackets and power supply.**

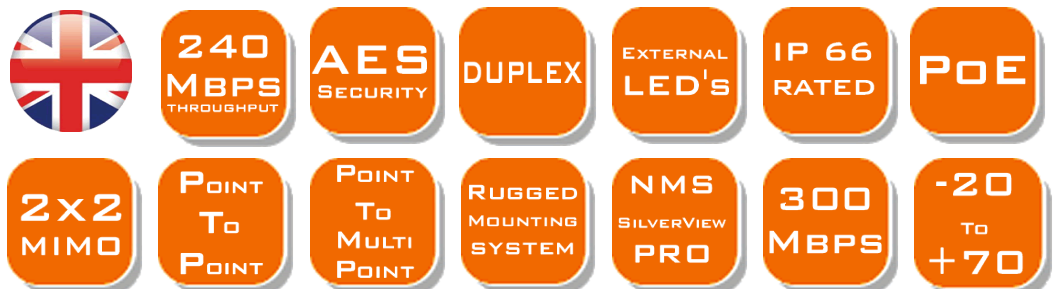
SILVERNET

What is the 11n MAX300 XT?

The 11n MAX300 XT operates at 5GHz and is an Ideal high bandwidth solution for long-range point to point links, With staggeringly high throughput, gigabit network interface and up to **60KM** distance transmission.

The 11n MAX300 XT leverages the outstanding performance of a 680MHz CPU to achieve phenomenal wireless throughput with Gigabit Ethernet connectivity.

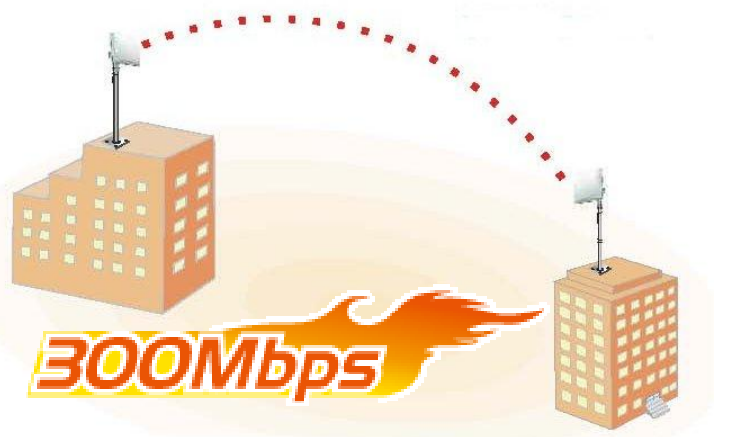
The 11n MAX300 XT is an Ideal high bandwidth solution for Long-range point to point links, enhanced features, such as MIMO, spatial multiplexing, real-time data tunnelling and reduced interframe spacing, gives the 11n MAX XT unparalleled data throughput capabilities.



T +44 (0) 871 2233 067
 F +44 (0) 870 622 0254
 E sales@silvernet.com

www.silvernet.com

Product Model	
SKU: SILMAX300XT-PCP	11n MAX300 XT link, 240Mbps, MIMO 2x2, Dual 23dBi integrated antenna
Radio Specs	
Transmission rate	11n: 300, 270, 240,180, 120, 90, 60, 30Mbps 11a: 54, 48, 36, 24, 18, 12, 9, 6Mbps
MIMO	2x2
Modulation	HT-OFDM with BPSK, QPSK, 16QAM, 64QAM
Standards	IEEE802.11n, IEEE802.11a
Channel Size	5MHz, 10MHz, 20MHz, 20/40MHz (Auto)
Channel (Country Dependent)	USA (FCC): 5.15GHz - 5.825GHz Europe (ETSI): 5.47GHz - 5.850GHz
Operating frequency	4.92Ghz ~ 6.1Ghz
RF output power	Up to 26dBm from port
Sensitivity	-82dBm@54Mbps, -74dBm@300Mbps
Operating Mode	AP, Station, Repeater and Bridge
Antenna	23dBi Integrated Dual polarized Antenna (H+V)
HPBW/ Horizontal/ Vertical	10° x 10°
Security - Network	
WPA2 (AES)	AES 128-BIT
Legacy Encryption	TKIP, WEP 64 / 128 / 152 bits
802.1x	Supports 802.1x Client and Server
Radius	Supports Radius Client, 802.11i
MAC	Supports MAC address filtering
Qos	Asymmetric Bandwidth Control
Vlan	802.1Q: Management, trunk, access and transparent mode
Electrical – Interface	
LAN/WAN	10/100/1000BASE-T (RJ-45) LAN Port (with Auto MDI/MDIX)
Power	6 watts (typical), 16 watts (max) DC 48–56 Volt POE (included in kit 100-240vac)
Management	
Remote Connection	Web, Telnet, ssh, SilverView Monitoring
SNMP	SNMP V2
Firmware	Upgradeable via web
Physical	
Dimensions	Unpacked radio 37 x 37 x 9 (cm) each
Weight	Unpacked radio 2.5Kg Each
Dust and Waterproof	Ip66 Certified
Mounting Bracket	3 Axis Magnesium alloy , wall or pole mount (included in kit)
Environment	
Operating Temperature	-20~70°C (Storage -40~90°C)
Humidity	0~95% (non-condensing)
Other	
Warranty	2 Year Parts and labour
MTBF	60000 Hrs
Pack Contents	2x 11n MAX XT, 2 x POE injector, 2 x Mounting bracket sets



'Link in a Box'

11n Series Product Information

11n LITE300 XT

Up to 300Mbps

◆ 11n up to **100Mbps data throughput** radio, DFS, TPC, IEEE802.11n, HT-OFDM, WPA, WPA2, WEB Management, AP, AP Client, and Bridge, POE. Built in dual 18dBi antenna

SKU: SILLITE300XT-PCP

11n BRIDGE300 XT

Up to 300Mbps

◆ 11n up to **240Mbps data throughput** radio, DFS, TPC, IEEE802.11n, HT-OFDM, WPA, WPA2, WEB Management, AP, AP Client, and Bridge, POE. External antenna.

SKU: SIL11nBRXT



Distributed by:

Copyright © SilverNet Limited. All rights reserved. All other company and product names may be trademarks of their respective companies. Whilst every effort is made to make sure the information shown is accurate SilverNet Limited cannot accept liability for any errors that may arise.

No freedom to use information, patents, trade marks, or other intellectual property rights is implied by the publication of this document. E&OE

SilverNet Limited reserve the right to change specifications and other information within this document without notice and your attention is brought to the fact that performance figures are under ideal conditions. Actual performance will depend on many environmental factors and it is recommended that a site survey if undertaken prior to installation.

Please also note that this equipment may also be subject to local legislative restrictions such as Band C operation within the UK. It is the end users responsibility to ensure that the installation complies with any such restrictions that are in force.